

产品手册

Product Catalogue



成都新锐鑫光通信技术有限公司

生产基地：四川省成都市青羊工业园区文光路199号4楼

办公地址：四川省成都市高新区创业路2号1楼

电话：028-81728221 81729221

传真：028-85132871

邮编：610091

网址：www.xrsoptical.com www.cd xinruixin.com

邮箱：xrsoptical@163.com crescentxy@xrsoptical.com

Chengdu Xinruixin Optical Communication Technology Co.,Ltd

Factory Add: 4/F No.199 Wenguang Road, Qingyang Industry Park, Chengdu, Sichuan, China

Office Add: 1/F, No.2 Chuangye Road, High-Tech. Zone, Chengdu, Sichuan, China

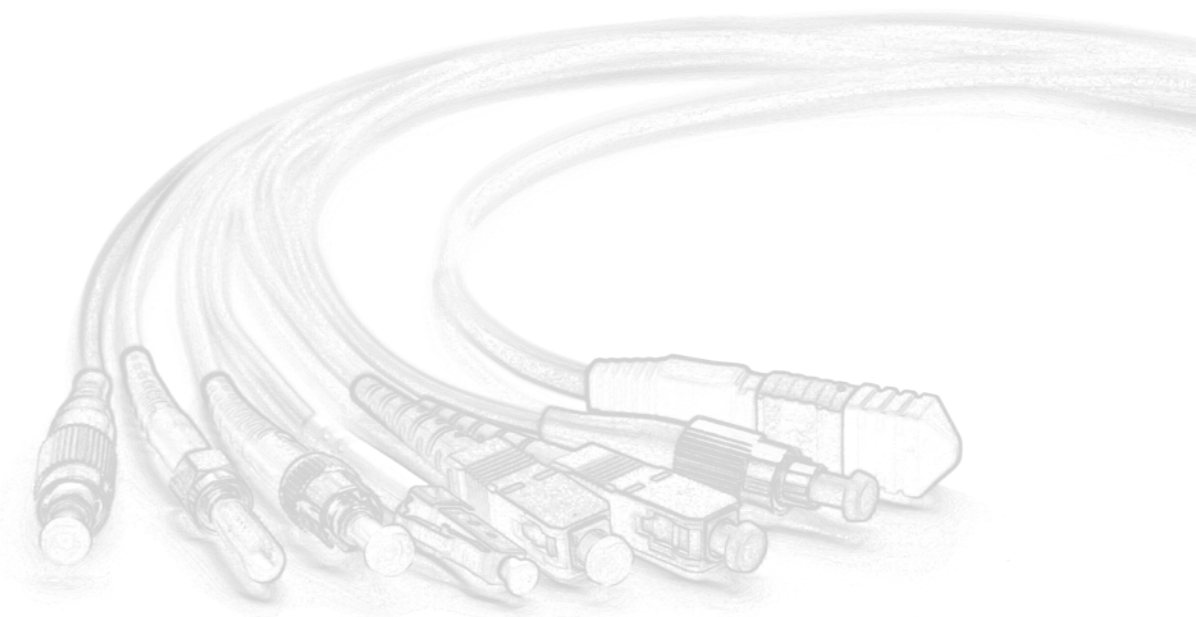
Tel: 0086-28-81728221

Fax: 0086-28-85132871

Zip: 610091

Web: www.xrsoptical.com www.cd xinruixin.com

Mail: xrsoptical@163.com crescentxy@xrsoptical.com





公司简介

Company Profile

成都新锐鑫光通信技术有限公司于 2009 年 2 月 17 日正式注册，2015 年被认定为高新企业，现已全面通过 ISO9001 质量管理体系认证、ISO14001 环境管理体系认证、OHSAS18001 职业健康安全管理体系认证及泰尔产品认证，并于 2016 年获得了国家广电总局颁发的入网认定证书。

新锐鑫光通信是一家从事专业性的以光通信为先导的高科技企业，目前拥有两百多名从事光通信产品研发、制造和销售相结合的高科技专业技术团队，全面引进日本、美国、台湾最先进的生产技术、设备和原料，建立了一套先进的标准生产线，形成了整套完整的质量保障体系。

公司经营的产品有：尾纤式组件、带隔离器组件、收/发组件、光纤活动连接器、适配器、衰减器、光分路器、光缆交接箱、ODF 单元箱、光缆分纤箱、机柜、光缆终端盒等。其中 MPO 光纤连接器、一种低损耗光纤连接器和一种新型尾纤组件等三十多项产品已获得相关专利证书。所有产品均符合 RoHS 和 REACH 国际环保标准。

新锐鑫从成立至今一直本着“客户至上、诚信为本、质量第一、科技创新”的企业文化，凭借雄厚的技术力量、先进的技术加工设备、严格的质量保证体系和完善的科学管理体制成功地创造了自己的品牌并迅速占领市场，已同广电、电信、移动、联通、网通、军网及石油等通信领域建立了长期、稳定的合作关系，我们将继续用专业的光通信人才为客户提供真诚周到的服务，与广大用户携手合作、互惠互利、共同创造出更加辉煌的业绩，以诚信走向成功。

Chengdu Xinruixin Optical Communication Technology Co.,Ltd (XRX) is established in 2009, which located in Chengdu Qingyang Industry Development Park. We are a high-tech company specialized in optical communication products, which is integrating manufacturing, R&D and marketing together.

Through 8 years development, XRX own more than 12,000 square meters office building, workshops, and 200 high-quality staffs. We also import the most advanced raw material, manufacturing, Q.C and R&D equipments, and technology from Japan, USA and Taiwan, which established a effective set of producing lines for the best product. Moreover, We have successfully got the ISO9001, ISO14001, OHSAS18001 certification,

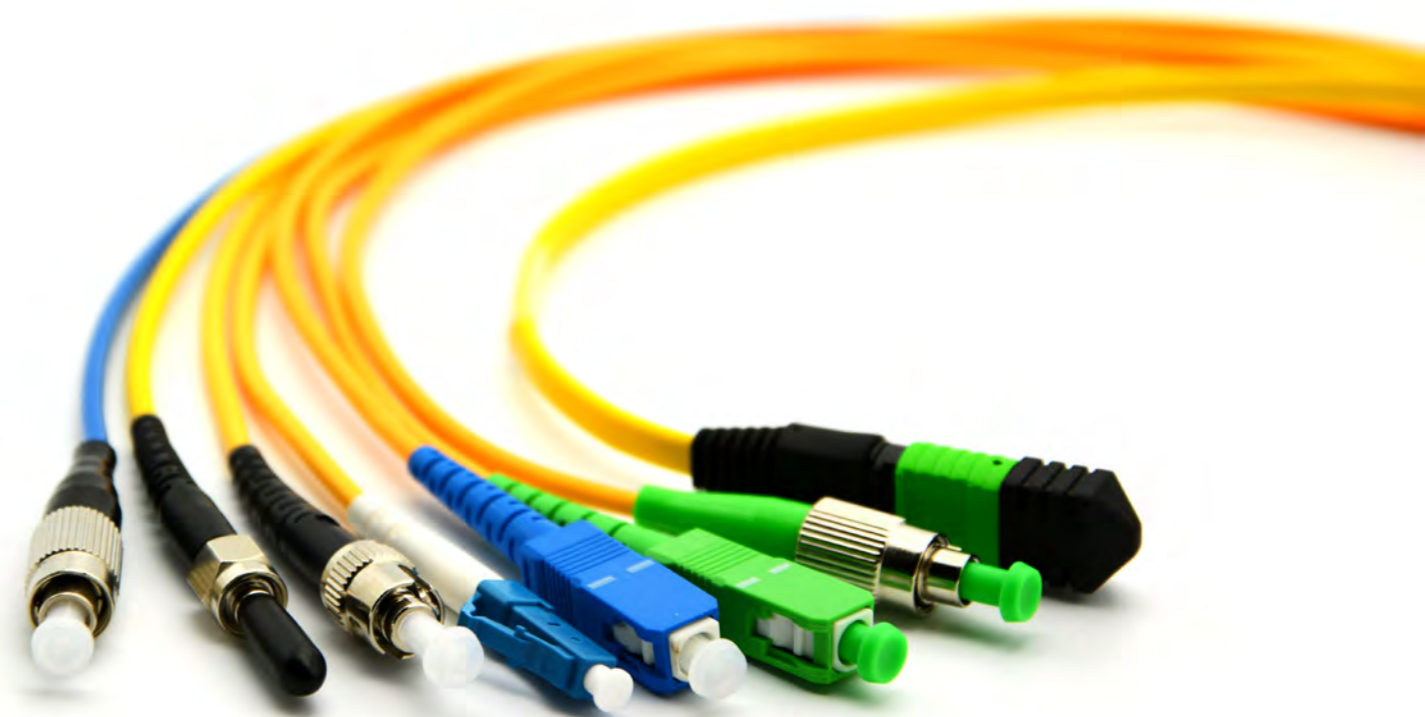
Our strength products are including Fiber connector(jumper and pigtail), Fiber pigtail assembly ,AOC, Receptacle(TOSA,ROSA,BOSA,and other FTTH products. Furthermore, our strength products are fiber pigtail assembly and connector, the MPO connector and a new type pigtail assemble have got more than 30 patents, all our products can be reached to the RoHS and REACH standards.

Because of our good quality products, best service, innovation notion, honesty business rules, our products are popular in domestic and overseas market. We are establishing a long relationship with CATV, Telecom ,China Mobile and Military Network and so on.

We hope to have a long and good Cooperation with all our customers.

- P2 资质证书 Certifications
- P3-P5 公司团队 Company Team
- P6 尾纤组件 Pigtail Assembly
- P7 插拔件 Receptacle
- P8 单芯光纤连接器 Simplex Optical Fiber Connector
- P9 双芯光纤连接器 Duplex Optical Fiber Connector
- P10 多芯光纤连接器 Multi Core Optical Fiber Connector
- P11 光纤适配器 Optical Fiber Adapter
- P12 光纤衰减器 Attenuator
- P13 光分路器 Optical Splitter
- P14 传统光缆交接箱 Traditional Optical Cable Cross -Connecting Cabinet
- P15 免跳光缆交接箱 Optical Cable Cross-connecting Cabinet without Patch cord
- P16 光缆分纤箱 Fiber Splitter Box
- P17 ODF 单元箱 Optical Fiber Distribution Unit (FDU)
- P18 光纤配线架 Optical Fiber Distribution Frame (ODF)
- P19 标准机柜 Standard Cabinet
- P20 户外综合柜 Outdoor Integrated Cabinet
- P21 多网合一箱 Multi-network Cabinet
- P22 光缆终端盒 Optical Cable Termination Box
- P23 光缆接头盒 Optical Fiber Splice Closure
- P24 FTTH 辅材及配件 FTTH Accessories
- P25 FTTH 解决方案及产品 FTTH Solution and other Products

目录 CONTENT



资质证书 Certifications

产品认证 Product Certification



体系认证 Certification



专利及高新技术企业证书 Patent and High-tech Certification



公司团队 Company Team



管理团队 Administration Team



培训会 Studying Team



生产团队 Manufacturing Team



技术团队 R&D Team



品质团队 Q.C Team



生产车间 Workshop



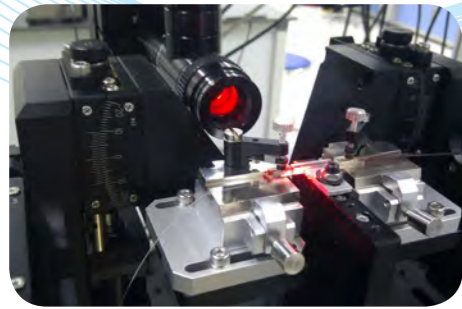
一线风采 producing worker



产品检测 Product Testing

设备 Equipment

生产设备 Manufacturing Machine



PLC设备
PLC Equipment



折弯机
Bending Machine



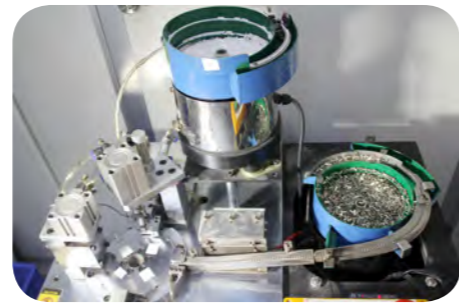
数控机床
Computer numerical control machine tool



光缆下线机
Optical Fiber Cable Cutting Machine



自动插芯摆盘机
Automatic Ferrule plate-placed Machine



自动压接机
Automatic Ferrule pressed machine



研磨机
Polishing Machine



自动注胶机
Automatic gluing machine



固化炉
Curing Oven



注塑机
Injection Molding machine



电热鼓风干燥箱
Dryer



激光标刻机
Laser maker

测试设备 Testing Equipment



体式显微镜
Stereomicroscope



视频显微镜
Video Microscope



盐雾机
Salt spray testing machine



插回损测试仪
IL and RL Testing machine



3D干涉仪
3D interferometer



恒温恒湿测试仪
Constant-temperature and humidity testing machine



投影仪
Projector



端面检测仪
End Face inspector

尾纤组件 Pigtail Assembly

产品特点

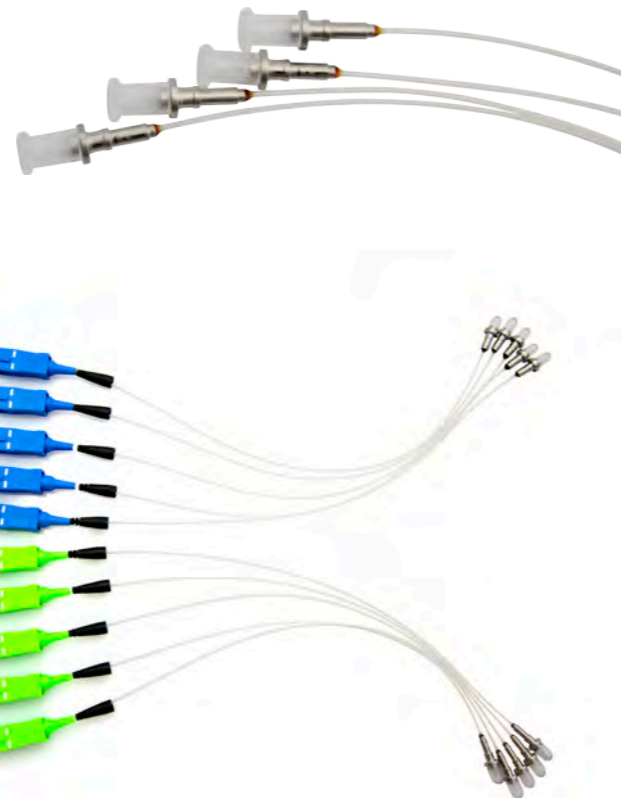
- 符合 IEC、YD/T1272.4-2005 和 YD/T1272.4-2007 标准
- 高回波损耗、低插入损耗
- 高可靠性、稳定性
- 常规接头 UPC、APC 等可供选择（非常规接头可定制）
- 光学性能可以依据客户要求而定
- 线长根据客户要求

性能指标

- 测试条件：单模 1310/1550LD 光源
- 测试值：插入损耗：标准端（UPC/APC） $\leq 0.2\text{dB}$
- 回波损耗：标准端 UPC $\geq 55\text{dB}$ ，SUS 端 $\geq 45\text{dB}$
标准端 APC $\geq 65\text{dB}$ ，SUS 端 $\geq 55\text{dB}$

用途

用于有源光器件配套（BOSA/TOSA/ROSA）



Product Features:

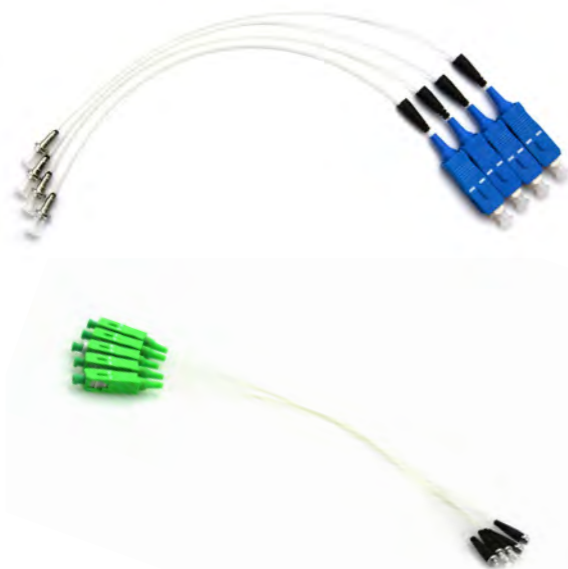
- Comply with IEC、YD/T1272.4-2005 and YD/T1272.4-2007 standards
- High return loss, low insertion loss
- High reliability, stability
- APC UPC Ferrule can be chosen (non- standard can be customized)
- Optical properties can be based on customer requirements
- Line length according to customer requirements

Performance Index:

- Test condition: single mode 1310/1550LD
- Test value: IL: standard (UPC/APC) $\leq 0.2\text{dB}$
RL: standard UPC $\geq 55\text{dB}$ ，SUS $\geq 45\text{dB}$
RL: standard APC $\geq 65\text{dB}$ ，SUS $\geq 55\text{dB}$
- Non-standard SUS 304 APC can according customer requirement

Application:

For active optical devices (BOSA/TOSA/ROSA)



插拔件 Receptacle



性能指标

性能指标：

- Wiggle 测试 $< 1.5\text{dB}$
- 损耗要求：IL PC $\leq 0.3\text{dB}$
- 四方 IL $< 0.2\text{dB}$ ，RL: 依据客户要求
- 插芯 PC 端面 3D 指标：
曲率半径： $10 < R < 25\text{mm}$
顶点偏移： $D < 50\mu\text{m}$
光纤高度 $-100 < t < 50\text{nm}$
- 光平面要求： $X \pm 0.05\text{mm}$ 以内
- 凹陷量要求： $X \pm 0.03\text{mm}$ 以内
- 插拔力：按照客户要求生产
- 端面标准：按照客户提供端面要求进行生产
- 各零部件之间压入力和退出力依据客户要求生产
- 同心度： 0.03mm

Technical Data

- Wiggle testing $< 1.5\text{dB}$
- IL $\leq 0.3\text{dB}$ (PC)
- 4 Direction IL: $< 0.2\text{dB}$ ，RL: According to customer's requirement
- IL Repeatability $\leq 0.3\text{dB}$
- PC 3D index:
ROC： $10 < R < 25\text{mm}$
Apex of set： $D < 50\mu\text{m}$
Fiber Height： $-100 < t < 50\text{nm}$
- Light plane requirement： H (according to customer's requirement) $\pm 0.05\text{mm}$
- Amount of sag： H (according to customer's requirement) $\pm 0.03\text{mm}$
- Insert and out power: according to customer's requirement
- End face standard：according to customer's requirement
- Parts Insertion and Extraction Force: according to customer's requirement
- Eccentricity: 0.03mm

单芯光纤连接器 Simplex Optical Fiber Connector

产品特点

- 符合 IEC、YD/T1272.4-2005 和 YD/T1272.4-2007 标准
- 高回波损耗、低插入损耗
- 高可靠性、稳定性
- PC、UPC、ACP 等可供选择
- 单模与多模
- 光缆型号 $\phi 0.9$ 、 $\phi 2$ 、 $\phi 3$

性能指标

- 插入损耗：PC $\leq 0.3\text{dB}$, UPC $\leq 0.2\text{dB}$, APC $\leq 0.2\text{dB}$
回波损耗：PC $\geq 45\text{dB}$ ，UPC $\geq 55\text{dB}$, APC $\geq 65\text{dB}$
- 重复性（1000次）： $\leq 0.2\text{dB}$
- 温度范围： $-40^{\circ} \sim +80^{\circ}$

用途

用于通讯网络、FTTH、CATV、测试设备、局域网

Product Features

- Comply with IEC、YD/T1272.4-2005 and YD/T1272.4-2007 standards
- High return loss, low insertion loss
- High reliability, stability
- With PC, UPC, ACP
- Singlemode and multimode
- Cable $\phi 0.9$, $\phi 2$, $\phi 3\text{mm}$

Performance Index

- IL (insertion loss): PC $\leq 0.3\text{dB}$, UPC $\leq 0.2\text{dB}$, APC $\leq 0.2\text{dB}$
RL(return loss) : PC $\geq 45\text{dB}$, UPC $\geq 55\text{dB}$, APC $\geq 65\text{dB}$
- Repeatability (1000Times) : $\leq 0.2\text{dB}$
- Temperature : $-40^{\circ} \sim +80^{\circ}$

Application

Communication Telecom networks, CATV, Test equipment, FTTH LAN, Data Center



双芯光纤连接器 Duplex Optical Fiber Connector

产品特点

- 符合 IEC、YD/T1272.4-2005 和 YD/T1272.4-2007 标准
- 高回波损耗、低插入损耗
- 高可靠性、稳定性
- PC、UPC、ACP 等可供选择
- 单模与多模

性能指标

- 插入损耗：PC $\leq 0.3\text{dB}$, UPC $\leq 0.2\text{dB}$, APC $\leq 0.2\text{dB}$
回波损耗：PC $\geq 45\text{dB}$ ，UPC $\geq 55\text{dB}$, APC $\geq 65\text{dB}$
- 重复性（1000次）： $\leq 0.2\text{dB}$
- 温度范围： $-40^{\circ} \sim +80^{\circ}$

用途

用于通讯网络、FTTH、CATV、测试设备、局域网



Product Features

- Comply with IEC、YD/T1272.4-2005 and YD/T1272.4-2007 standards
- High return loss, low insertion loss
- High reliability, stability
- With PC, UPC, ACP
- Singlemode and multimode

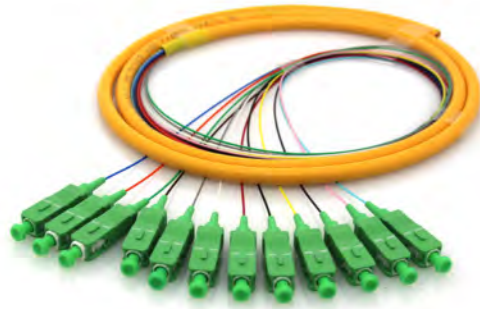
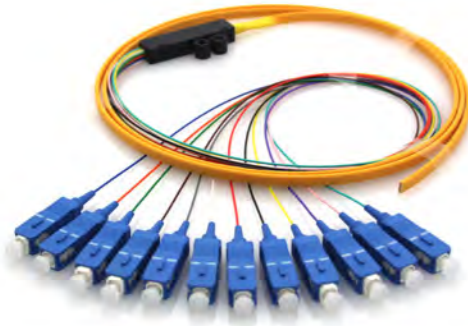
Performance Index:

- IL (insertion loss): PC $\leq 0.3\text{dB}$, UPC $\leq 0.2\text{dB}$, APC $\leq 0.2\text{dB}$
RL(return loss) : PC $\geq 45\text{dB}$, UPC $\geq 55\text{dB}$, APC $\geq 65\text{dB}$
- Repeatability (1000Times) : $\leq 0.2\text{dB}$
- Temperature : $-40^{\circ} \sim +80^{\circ}$

Application:

Communication Telecom networks, CATV, Test equipment, FTTH LAN, Data Center

多芯光纤连接器 Multi Core Optical Fiber Connector



产品特点

- 符合 IEC、YD/T1272.4-2005 和 YD/T1272.4-2007 标准
- 高回波损耗、低插入损耗
- 高可靠性、稳定性
- PC、UPC、ACP 等可供选择
- 单模与多模
- 光缆型号：束状，带状，防水尾缆等

性能指标

- 插入损耗：PC ≤ 0.3dB, UPC ≤ 0.2dB, APC ≤ 0.2dB
回波损耗：PC ≥ 45dB, UPC ≥ 55dB, APC ≥ 65dB
- 重复性 (1000) 次：≤ 0.2dB
- 温度范围：-40° ~ +80°

用途

用于通讯网络、FTTH、CATV、测试设备、局域网网

Product Features

- Comply with IEC、YD/T1272.4-2005 and YD/T1272.4-2007 standards
- High return loss, low insertion loss
- High reliability, stability
- With PC, UPC, ACP
- Singlemode and multimode
- Cable type: buddle, ribbon and waterproof pigtail

Performance Index

- IL (insertion loss): PC ≤ 0.3dB, UPC ≤ 0.2dB, APC ≤ 0.2dB
RL(return loss) : PC ≥ 45dB, UPC ≥ 55dB, APC ≥ 65dB
- Repeatability (1000Times) : ≤ 0.2dB
- Temperature : -40° ~ +80°

Application

Communication Telecom networks, CATV, Test equipment, FTTX LAN, Data Center



光纤适配器/Optical Fiber Adapter

产品特点

- 符合 IEC 标准
- 兼容性好
- 高可靠性、稳定性
- 单模 / 多模

性能指标

- 插入损耗：≤ 0.2dB
- 重复性 (1000 次)：≤ 0.2dB
- 互换性：≤ 0.2dB

用途

通信网络、数据传输、测试仪器、局域网、FTTH、CATV

Product Features

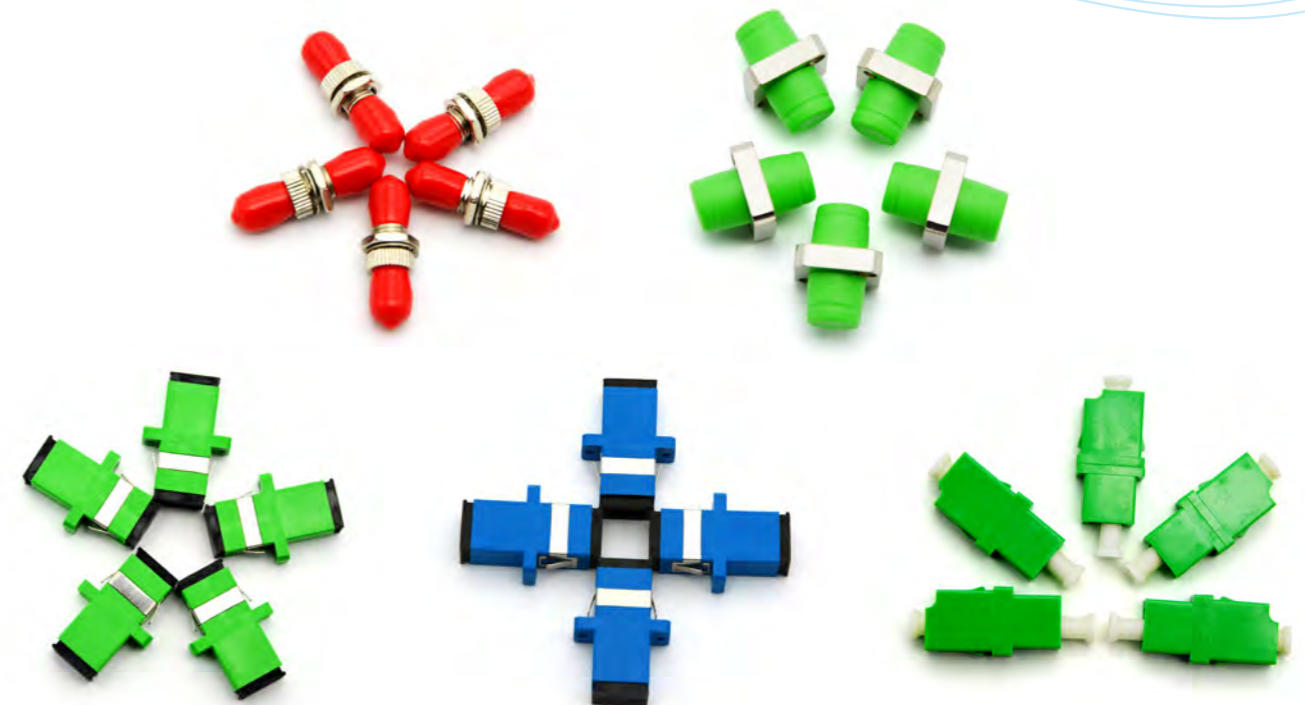
- Comply IEC standards
- Good compatibility
- High reliability and stability
- Singlemode and multimode

Performance index

- Insert loss: ≤ 0.2dB
- Repeatability (1000) : ≤ 0.2dB
- Interchangeability : ≤ 0.2dB

Application

Communication network, data transmission, test instrument, optical fiber local area network, FTTH, CATV.



光纤衰减器/Attenuator



产品特点

- 极小的插入损耗偏差
- 衰减方式多，接口形式齐全
- 固定式，高回损式，在线式，可调式
- 重复性和互换性好
- 高可靠性和高稳定性

性能指标

- 固定衰减值：1、2、3、5、10、15、20dB 或任意
- 回波损耗： $\geq 50\text{dB}$ (PC)、 $\geq 60\text{dB}$ (APC)
- 工作波长：1310nm 或 1550nm
- 衰减范围：0-30dB
- 温度范围： $-40^{\circ}\text{C} \sim +80^{\circ}\text{C}$

用途

通信系统，CATV, 大功率器件测量

Product Feature:

- Small insertion loss deviation;
- Attenuation mode, interface form complete;
- Fixed type, high back loss type, online type, adjustable type
- Good repeatability and interchangeability;
- High reliability and stability.

Performance Index:

- Fixed attenuation value: 1、2、3、5、10、15、20dB or any;
- Return loss: $\geq 50\text{dB}$ (PC), $\geq 60\text{dB}$ (APC)
- Working wavelength: 1310nm or 1550nm
- Attenuation range: 0-30dB
- Temperature range: $-40^{\circ}\text{C} \sim +80^{\circ}\text{C}$

Application:

Fiber optic communication systems, CATV, high-power optical device measure

光分路器/Optical splitter

产品特点

- 附件损耗低，插入损耗小
- 偏振相关损耗低
- 分光比和分支路数任选
- 裸纤式，插片式，托盘式，ABS 盒式，机架式

性能指标

- 接续损耗： $<0.2\text{dB}$
- 温度特性： $<0.1\text{dB}$ ($-40^{\circ}\text{C} \sim +65^{\circ}\text{C}$)
- 适用光纤：SM、MM
- 分光比：任意
- 工作波长： $1260\text{nm} \sim 1650\text{nm}$

用途

光纤通信系统，光纤局域网，CATV，FTTH
光纤传感器，测量仪器



Product Features:

- Low accessories loss, small insertion loss
- Low polarization dependent loss
- Optional splitting ratio and number of branches
- Bare fiber type, insert type, tray type, ABS box type, patch panel type

Performance Index

- Splicing loss: $<0.2\text{dB}$
- Environment temperature: $<0.1\text{dB}$ ($-40^{\circ}\text{C} \sim +65^{\circ}\text{C}$)
- Suitable optic fiber: SM.MM
- Splitting ratio: arbitrary
- Working wavelength: $1260\text{nm} \sim 1650\text{nm}$

Application:

Optical fiber communication system, fiber - optic local area network, CATV, FTTH, fiber optic sensor, measuring instrument



传统光缆交接箱 Traditional Optical Cable Cross -Connecting Cabinet



产品特点

- 熔接配线一体化模块
- 配置有光缆引入单元
- 防老化、抗辐射
- 光缆引入、接地、固定完善、可靠
- 适合普通与带状光缆使用，密度高
- 有效防止水汽凝结，防雨、防尘、防虫害
- 能在室外恶劣环境中正常工作
- 全程保护跳纤，并保证其弯曲半径 $\geq 40\text{mm}$

性能指标

- 环境温度： $-40^{\circ}\text{C} \sim +60^{\circ}\text{C}$
- 相对湿度： $\leq 95\%$ ($+40^{\circ}\text{C}$ 时)
- 大气压力： $70\text{KPa} \sim 106\text{KPa}$
- 连接器插入损耗： $\text{PC} \leq 0.3\text{dB}, \text{UPC} \leq 0.2\text{dB}, \text{APC} \leq 0.2\text{dB}$
- 连接器回波损耗： $\text{PC} \geq 45\text{dB}, \text{UPC} \geq 55\text{dB}, \text{APC} \geq 65\text{dB}$
- 耐压强度： 3000V (DC) 不击穿、无飞弧
- 绝缘电阻： $\geq 2 \times 10^4 \text{M}\Omega/500\text{V (DC)}$
- 阻燃性：符合 YD/T988-2007 标准
- 箱体各表面能承受与表面垂直的压力大于 980N ，箱门打开后，在门的最外端能承受的垂直压力大于 200N

用途

光缆接入网中主干光缆与配线光缆的活动连接，PON 技术 FTTH 光纤接入网络，实现光纤的熔接、盘贮、配线及调度。

Product Feature

- Cable splicing and distribution integrated module
- Optical cable inlet unit
- Anti-aging, anti-radiation
- Fixed and reliable cable leading, grounding
- Suitable for ordinary and ribbon cable, high density
- Waterproof, dustproof, anti-pest
- Work in outdoor environment
- Full protection jumping fiber, bending radius $\geq 40\text{mm}$

Performance index

- Environment temperature: $-40^{\circ}\text{C} \sim +65^{\circ}\text{C}$
- Relative humidity: $\leq 95\%$ ($+40^{\circ}\text{C}$)
- Atmospheric pressure: $70\text{Kpa} \sim 106\text{Kpa}$
- Optic fiber connector: IL: $\text{PC} \leq 0.3\text{dB}, \text{UPC} \leq 0.2\text{dB}, \text{APC} \leq 0.2\text{dB}$
- Optic fiber connector RL: $\text{PC} \geq 45\text{dB}, \text{UPC} \geq 55\text{dB}, \text{APC} \geq 65\text{dB}$
- Compressive strength: 3000V (DC) No breakdown, no arcing
- Insulation resistance: $\geq 2 \times 10^4 \text{M}\Omega/500\text{V (DC)}$
- Anti-fire: YD/T988-2007 standard
- Every side of the cabinet can bear the vertical pressure of 980N , and 200N for the outer edge ever the door when the door is opened.

Application

Connecting the trunk cable and the distribution cable, achieve splicing, disk storage, wiring and scheduling in the PON technology FTTH network

免跳光缆交接箱 Optical Cable Cross-connecting Cabinet without Patch cord



产品特点

- 减少适配器和跳纤，减少故障点和插损
- 采用插片式光分路器的安装方式
- 熔接区托盘分两层，上层为熔接区，下层为储存区
- 配置有光缆引入单元
- 防老化、抗辐射
- 光缆引入、接地、固定完善、可靠
- 有效防止水汽凝结，防雨、防尘、防虫害
- 能在室外恶劣环境中正常工作
- 全程保护跳纤，并保证其弯曲半径 $\geq 40\text{mm}$

性能指标

- 环境温度： $-40^{\circ}\text{C} \sim +60^{\circ}\text{C}$
- 相对湿度： $\leq 95\%$ ($+40^{\circ}\text{C}$ 时)
- 大气压力： $70\text{KPa} \sim 106\text{KPa}$
- 连接器插入损耗： $\text{PC} \leq 0.3\text{dB}, \text{UPC} \leq 0.2\text{dB}, \text{APC} \leq 0.2\text{dB}$
- 连接器回波损耗： $\text{PC} \geq 45\text{dB}, \text{UPC} \geq 55\text{dB}, \text{APC} \geq 65\text{dB}$
- 耐压强度： 3000V (DC) 不击穿、无飞弧
- 绝缘电阻： $\geq 2 \times 10^4 \text{M}\Omega/500\text{V (DC)}$
- 阻燃性：符合 YD/T988-2007 标准

用途

用于光缆接入网中主干光缆与配线光缆的活动连接，PON 技术 FTTH 光纤接入网络，实现光分路器的安置、光纤的熔接、盘贮、配线及调度。

Product Feature:

- Less adapters and patch cord, less defect points and loss rate
- Adopts splitter-type optical splitter installation
- Splicing zone tray is divided into two layers. The upper layer is the weld area, the lower layer is the storage area.
- With fiber introducing unit
- Anti-aging, anti-radiation
- Reliable cable introduction, grounding and fixed
- Effectively prevent moisture condensation, rain, dust, pest control
- Can work in harsh outdoor environments
- Full protection jumping fiber, bending radius $\geq 40\text{mm}$

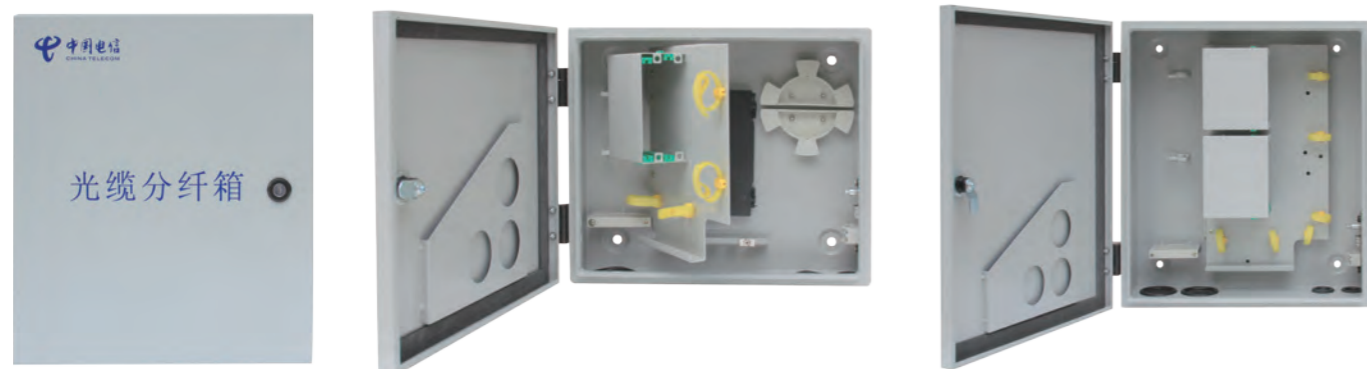
Performance Index:

- Environmental temperature: $-40^{\circ}\text{C} \sim +60^{\circ}\text{C}$
- Relative humidity: $\leq 95\%$ ($+40^{\circ}\text{C}$)
- Atmospheric pressure: $70\text{kpa} \sim 106\text{kpa}$
- Insert loss: $\text{PC} \leq 0.3\text{dB}, \text{UPC} \leq 0.2\text{dB}, \text{APC} \leq 0.2\text{dB}$
- Return loss: $\text{PC} \geq 45\text{dB}, \text{UPC} \geq 55\text{dB}, \text{APC} \geq 65\text{dB}$
- Pressure resistance: 3000V (DC) No breakdown, no arcing
- Insulation resistance: $\geq 2 \times 10^4 \text{M}\Omega/500\text{V (DC)}$
- Anti-fire: YD/T988-2007 standard

Application:

Connecting the trunk cable and the distribution cable, achieve splicing, disk storage, wiring and scheduling in the PON technology FTTH network

光缆分纤箱 Fiber Splitter Box



产品特点

- 箱体容量：分为 16 芯和 32 芯等
- 箱体材质：冷轧钢板，SMC
- 通道：市话光缆通道，皮线光缆通道
- 采用分区功能化设计，结构清晰
- 安装方式分为落地型、架空型、壁挂型、嵌入型、挂杆型

性能指标

- 环境温度：-40°C ~ +60°C
- 相对湿度：≤ 95%(+40°C时)
- 大气压力：70kpa-106kpa
- 连接器损耗（插入，重复）：≤ 0.2db
- 回波损耗：PC ≥ 45db, UPC ≥ 55dB, APC ≥ 65dB
- 光纤连接器插拔 1000 次变化量 ≤ 0.2dB
- 高压防护接地机箱绝对电阻：≥ 2×10⁴MΩ/500V(DC)
- 耐压强度：3000V(DC) 不击穿，无飞弧

用途

FTTH 光纤接入网络，实现光分路器的安置、光纤的熔接、盘贮、配线及调度

Product Features:

- Cabinet capacity: 16 cores, 32 cores and so on
- Material: cold-rolled steel, SMC
- Cable channels: local cable channels and drop cable channels
- Adopt division functional design, clearly structure
- Installation: earth floor type, overhead type, wall-mounted type, embedded type, hanging rod type

Performance index:

- Environment temperature: -40°C ~ +60°C
- Relative humidity: ≤95%(+40°C)
- Atmospheric pressure: 70 ~ 106Kpa
- Connector loss (insert, repeat): ≤ 0.2db
- Return loss: PC≥45db, UPC≥55dB, APC≥65dB
- Optical fiber connector plug 1000 times, change ≤ 0.2dB
- Insulation resistance: ≥2×10⁴MΩ/500V(DC)
- Compressive strength: 3000V(DC) No breakdown, no arcing

Application:

FTTH fiber access network to achieve the placement of optical splitter, fiber fusion, disk storage, distribution and scheduling

ODF单元箱 Optical Fiber Distribution Unit (FDU)

产品特点

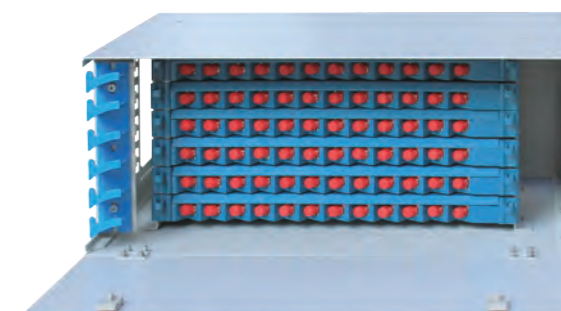
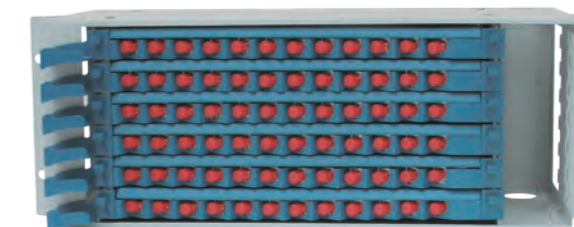
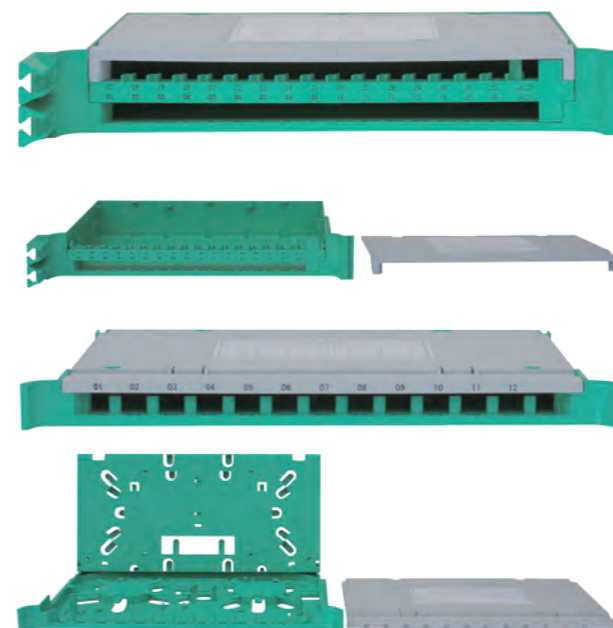
- 产品采用优质钢板制作，表面静电喷涂，外形美观
- 采用熔接配线一体化模块，密度高，容量大
- 单元化设计，配置灵活
- 具有可靠的光纤固定和接地装置
- 光纤走线合理，便于管理
- 适配器类型可为 FC、SC 和 LC 型等

性能指标

- 工作温度：-25° ~ +45°
- 相对湿度：≤ 95%(+40°C时)
- 贮运温度：-25 ~ +55°C
- 耐压强度：3000V (DC) 不击穿、无飞弧
- 插入损耗：PC ≤ 0.3dB, UPC ≤ 0.2dB, APC ≤ 0.2dB
- 回波损耗：PC ≥ 45dB, UPC ≥ 55dB, APC ≥ 65dB)
- 绝缘电阻：≥ 1000MΩ/500V(DC)

用途

用于光纤到小区、光纤到大楼、远端模块及无线基站的中小配线系统



Product Feature:

- Quality cold-rolled steel, the surface with coating electrostatic spray, beautiful appearance
- Cable splicing and distribution integrated module, high intensity, large capacity
- Unitized design, flexible configuration
- Reliable cable fixing and grounding device
- Path design of full fiber, easy to manage
- Suitable for FC, SC, LC adapter

Performance Index:

- Environment temperature: -25° ~ +45°
- Relative humidity: ≤95%(+40°C)
- Storage temperature: -25 ~ +55°C
- Compressive strength: 3000V(DC) No breakdown, no arcing
- IL: PC≤0.3dB, UPC≤0.2dB, APC≤0.2 dB
- RL: PC≥45dB, UPC≥55dB, APC≥65dB)
- Insulation resistance: ≥ 1000MΩ/500V (DC)

Application:

Used for FTTH(fiber-to-cell, fiber-to-the-building) remote modules and wireless base stations of small and medium Fiber distribution systems

光纤配线架 Optical Fiber Distribution Frame (ODF)



■ 产品结构

- 采用优质冷扎钢板，全数控加工，表面静电喷塑，外形美观
- 内部框架采用优质不锈钢，增强抗腐蚀能力
- 19" 标准机架，全面操作
- 采用一体化模块设计，熔接、配线、在同一模块内操作
- 配置灵活、安装快捷
- 全程保护跳纤，并保证其弯曲半径 $\geq 40\text{mm}$
- 容量大、密度高。最大芯数 864
- 可存储多余跳纤
- 操作、维护方便快捷
- 具有独立开放式结构，前后左右门设立，可根据需要实现三个方向的扩容个方向的扩容

■ 性能指标

- 工作温度： $-5^{\circ}\text{C} \sim +45^{\circ}\text{C}$
- 相对湿度：95% ($+40^{\circ}\text{C}$ 时)
- 大气压力：(70 ~ 106KPa)
- 连接器插入损耗： $\text{PC} \leq 0.3\text{dB}$, $\text{UPC} \leq 0.2\text{dB}$, $\text{APC} \leq 0.2\text{dB}$
- 连接器回波损耗： $\text{PC} \geq 45\text{dB}$, $\text{UPC} \geq 55\text{dB}$, $\text{APC} \geq 65\text{dB}$
- 耐压强度：3000V (DC) 不击穿、无飞弧
- 高压防护接地与机架间绝缘电阻： $1000\text{M}\Omega/500\text{V}(\text{DC})$
- 阻燃性：符合 YD/T778-2011 标准

■ 用途

连接分配网络与设备光缆
跳接局内光缆终端设备

■ Structure:

- Quality cold-rolled steel, Full CNC machining, the surface electrostatic spray, good appearance
- Internal frame with high-quality stainless steel, enhanced corrosion resistance
- 19-inch standard rack, fully operational
- Adopt integrated module design, welding and wiring in the same module operation
- Flexible configuration, convenient installation
- Protect the fiber and ensure its bending radius $\geq 40\text{mm}$
- Large capacity, high density, the maximum cores 864 core
- Redundant fiber jumpers can be stored
- Convenient operation and maintenance
- With independent open structure, front and rear doors set up, according to the need to achieve the expansion of the three directions

■ Performance Index:

- Environment temperature: $-5^{\circ}\text{C} \sim +45^{\circ}\text{C}$
- Relative humidity: 95% ($+40$)
- Atmospheric pressure: 70 ~ 106Kpa
- Optic fiber connector: IL: $\text{PC} \leq 0.3\text{dB}$, $\text{UPC} \leq 0.2\text{dB}$, $\text{APC} \leq 0.2\text{dB}$
- Optic fiber connector: RL: $\text{PC} \geq 45\text{dB}$, $\text{UPC} \geq 55\text{dB}$, $\text{APC} \geq 65\text{dB}$
- Compressive strength: 3000V(DC) No breakdown, no arcing
- Insulation resistance: $\geq 1000\text{M}\Omega/500\text{V}(\text{PC})$
- Anti-fire: YD/T778-2011 standard

■ Application:

Connect the distribution network and the device cable
Connect fiber optic cable terminal equipment



标准机柜 Standard Cabinet

■ 结构特点

- 采用优质冷扎钢板，全数控加工，表面静电喷塑，外形美观
- 高密度六角网孔门或玻璃门，机械保护、通风散热
- 工艺精湛，尺寸精密
- 可方便安装集中配电单元：备有接地螺栓及标识
- 上部、下部多出走线通道
- 前后门均看拆卸（可单开、双开）左右侧板采用活动卡扣可灵活装卸
- 配有风机，电源插座等配件
- 可以根据客户定制

■ 用途

用于安装或置放计算机网络设备，通信设备等

■ Structural Features:

- Quality cold-rolled steel, full CNC machining, the surface with coating electrostatic spray, beautiful appearance
- High-density hexagonal mesh doors or glass door, mechanical protection, ventilation cooling
- Exquisite workmanship, precision size
- Installed centralized power distribution unit, with grounding bolts and identification
- Upper and lower multi run line channel
- Front and rear doors can be demolished (single-open, double-open).Left and right side panels with activity buckle can be flexible loaded and unloaded
- With fans, power outlets
- Can be designed according to customers

■ Application:

Installing and placing computer network and communications equipment

户外综合柜 Outdoor Integrated Cabinet

产品特点

- 高可靠性、免维护、快速拼装、适用于野外恶劣环境
- 集成度高、占地少、建设周期短，有效降低建设成本
- 完善的热设计、高效的节能减排，有效降低运营成本
- 支持快速拼装、整装，适用于山顶、楼顶多场景安装
- 动环监控，全方位告警信号检测，实时告警信息上报

性能指标

- UPS 电源：1KW / 2KW / 3KW / 6KW / 10KW
- 配电单元：交流配电 / 直流配电 / 交直流配电
- 动环监控：1U 监控主机包含（门禁、水浸、烟雾、撞击、温湿度、市电断告警）
- 机柜内尺寸：定制化
- 工作环境温度：-40°C ~ +60°C
- 防护等级：IP55

用途

用于安装基站设备、电源设备、蓄电池、温控设备、传输设备及其他配套设备



Product introduction:

- High reliability, maintenance-free, fast assembly, suitable for harsh outdoor environments;
- High integration, small footprint, short construction period, and effective reduction of construction costs;
- Perfect thermal design, efficient energy-saving emission reduction, effectively reduce operating costs;
- Support for rapid assembly, suitable for the peak, the roof installation;
- Dynamic ring monitoring, all-round alarm signal detection, real-time alarm information reported.

Performance index:

- UPS power supply: 1KW / 2KW / 3KW / 6KW / 10KW
- Distribution unit: AC distribution / DC distribution / AC-DC power distribution;
- Dynamic loop monitoring: 1U monitoring host includes (access control, flooding, smoke, impact, temperature and humidity, electricity off alarm);
- Cabinet Size: customized;
- Working temperature: -40°C ~ +60°C;
- Protection grade: IP55

Application:

For the installation of base station equipment, power equipment, batteries, temperature control equipment, transmission equipment and other ancillary equipment

多网合一箱 Multi-network Cabinet

产品特点

- 有效做到（移动联通）、广电、电信三网合一，节省了施工空间
- 箱体采用优质冷轧制成，经静电喷塑处理
- 光分路器模块采用插片式、盒式模块化设计，具有很强大的互换性和通用性
- 在机箱厚度保持一致的情况下，光纤熔接盘最大支持 12 片，满足施工过程中任意形式的接续
- 各种接头连接方便，安装灵活
- 支持各种管钱连接头的管理，如 SC、LC、ST、MT-RJ 等

性能指标

- 环境温度：-40°C ~ +60°C
- 大气压力：70 ~ 106Kpa
- 相对湿度：≤ 85% (+30°C)
- 绝缘电阻：≥ 2X10⁴MΩ
- 耐压强度：3000V (DC) 不击穿、无飞弧
- 箱体静负荷能力：壳盖 ≥ 980N，侧表面 ≥ 980N，门铰链 ≥ 200N

用途

光缆与光通信设备的配线连接



Product Description:

- Effective integrating Mobile Unicom, CATV, Telecom together, greatly saving construction space;
- Made of high-quality cold-rolled steel, with the electrostatic spraying surface;
- Optical splitter module adopt insert cartridge, modular box design, with a very strong interchangeability and versatility
- In the case of thickness consistent, supporting maximum 12 pieces splice tray to meet the construction process in any form of the continuation.
- A variety of connector are easy to connect and flexible to install;
- Support various connectors management, such as SC, LC, ST, MT-RJ and so on.

Performance Index:

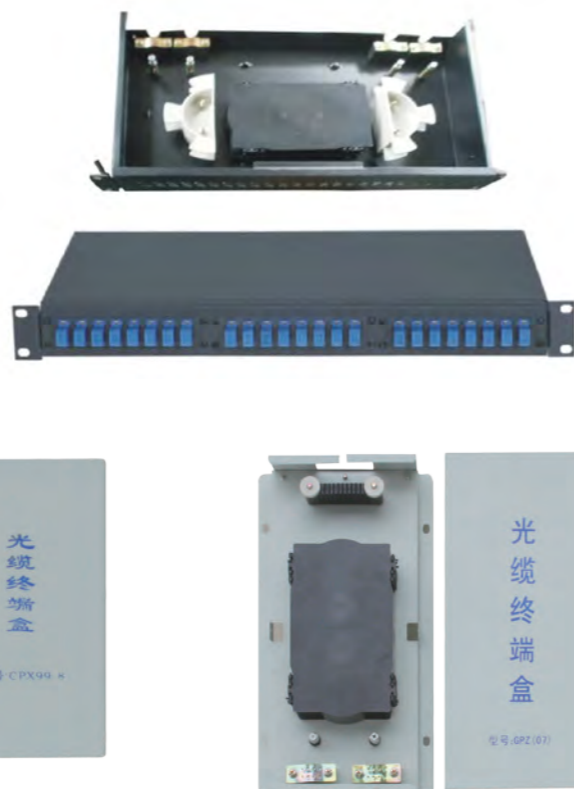
- Environment temperature: -40°C ~ +60°C
- Atmospheric pressure : 70 ~ 106Kpa
- Relative humidity : ≤85% (+30°C)
- Insulation resistance ≥ 2X10⁴MΩ
- Compressive strength: 3000V(DC) No breakdown, no arcing
- Box static load capacity: shell cover ≥ 980N, side surface ≥ 980N, door hinge ≥ 200N

Application:

Fiber optic cable and optical communication equipment wiring connections



光缆终端盒 Optical Cable Termination Box



产品特点

- 材料选用优质冷轧钢板，表面静电喷塑
- 外型美观，坚固
- 多种出纤方式可选
- 设置加强芯及光缆固定装置
- 加强芯与壳体绝缘，配有接地引入端子
- 附件配置齐全
- 操作、维护方便、快捷

性能指标

- 工作温度：-25℃ ~ +45℃
- 储存温度：-25℃ ~ +55℃
- 相对湿度：≤ 85%(30℃时)
- 气压：70kPa ~ 106kPa
- 绝缘电阻：>1000MΩ/500V (DC)
- 耐压强度：15KV(DC) 不击穿、无飞弧

用途

用于光缆成端，固定
光纤与尾纤熔接及余纤的收容和保护

Structural Features:

- Quality cold-rolled steel, the surface electrostatic spray
- Good appearance, sturdy
- Optional fiber way
- Strengthen the core and shell insulation, and equipped with grounding leading in terminal
- Completely additional configuration
- Convenient operation and maintenance

Performance Index:

- Working temperature: -25℃ ~ +45℃
- Storage temperature: -25℃ ~ +55℃
- Relative humidity: ≤85% (+30℃)
- Atmospheric pressure: 70Kpa ~ 106Kpa
- Insulation resistance: >1000MΩ/500V (DC)
- Compressive strength: 15KV(DC)No breakdown, no arcing

Application:

For cable terminal fixing, fiber and pigtail welding and residual fiber storage and protection

光缆接头盒 Optical Fiber Splice Closure



产品特点

- 外壳采用特殊材料
- 具有防水、防潮、防腐性好
- 附件配置齐全
- 密封性能可靠
- 强度高、可直埋或架空安装使用
- 接地保护可靠
- 操作、维护方便、快捷

性能指标

- 环境温度：-40℃ ~ +65℃
- 大气压力：70 ~ 106KPa
- 抗拉伸力：> 1000N
- 绝缘电阻：> 2X10⁴MΩ/500V(DC)
- 耐压强度：15KV(DC) 不击穿、无飞弧

用途

适用于各种结构光缆的架空、管道、直埋等敷设方式之直通和分支连接

Product Introduction:

- The housing is made of special materials
- With waterproof, moisture-proof, anti-corrosion function
- Complete attachment configuration
- Reliable sealing
- High strength, can be buried or overhead installation
- Reliable grounding protection
- Convenient operation and maintenance

Performance Index:

- Environment temperature: -40℃ ~ +65℃
- Atmospheric pressure: 70 ~ 106Kpa
- Anti-tensile strength: > 1000N
- Insulation resistance: 2X10⁴MΩ/500V(DC)
- Compressive strength: 15KV(DC)No breakdown, no arcing

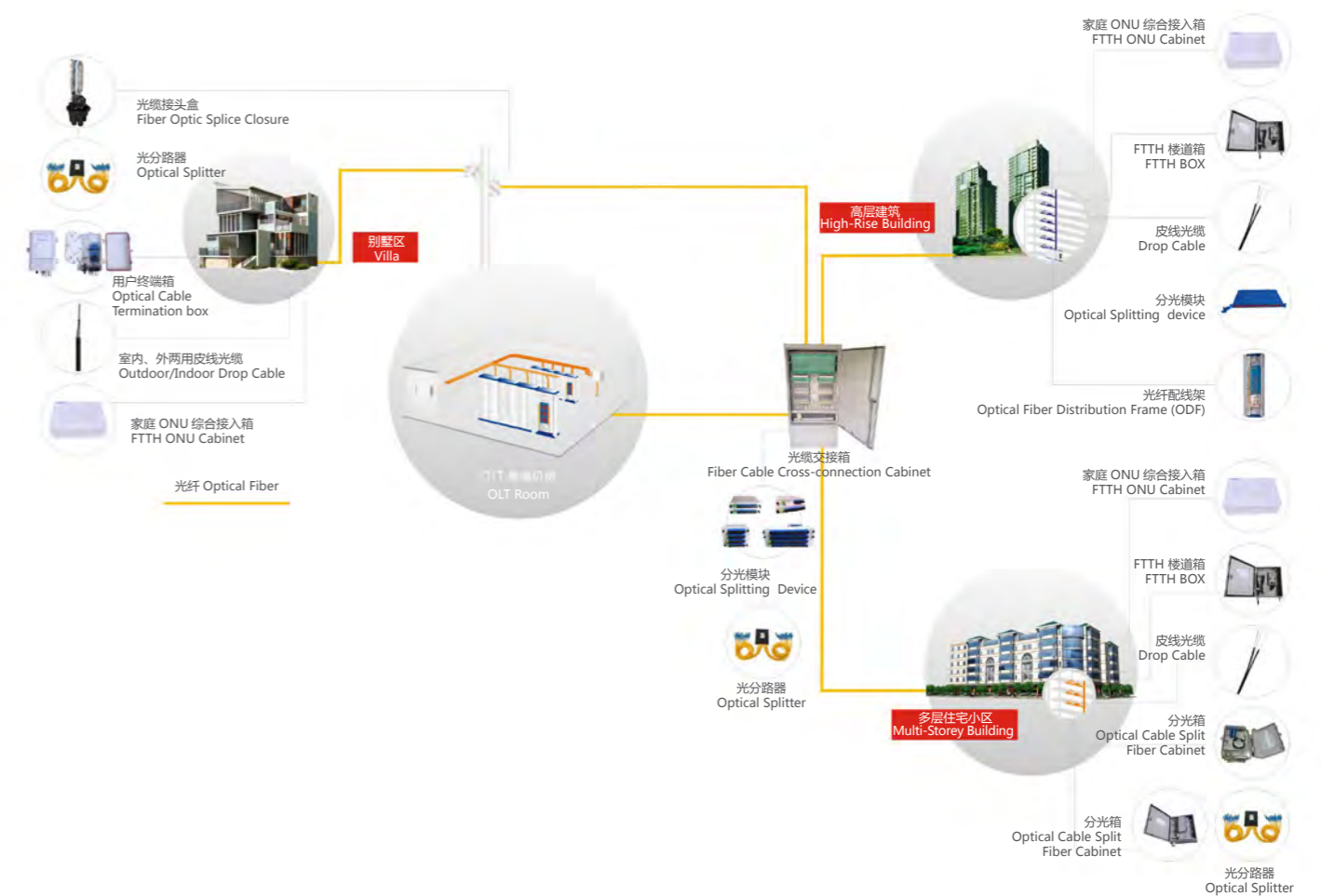
Application:

Suitable for direct connection and branch connection of overhead, pipeline, direct buried and other laying methods

FTTH辅材及配件 / FTTH Accessories

皮线光缆熔接保护盒 (圆形白色) Splicing protective cassette for fiber drop cable (round white)	皮线光缆熔接保护盒 (圆形黑色) Splicing protective cassette for fiber drop cable (round black)	皮线光缆熔接保护盒 (方形白色) Splicing protective cassette for fiber drop cable (square white)	皮线光缆熔接保护管 (双钢针和单钢针) Splicing protective tube for fiber drop cable (double and single steel needle)
光纤面板 (下插式) Optical fiber panel (under plug)	光纤面板 (下插式) Optical fiber panel (under plug)	光纤面板 (斜插式) Optical fiber panel (oblique plug)	光纤面板 (斜插式) Optical fiber panel (oblique plug)
熔纤盘12芯(A) Splice tray-single fiber 12cores(A)	熔纤盘16芯 Splice tray-single fiber 16cores	熔纤盘24芯(A) Splice tray-single fiber 24cores(A)	熔纤盘24芯(B) Splice tray-single fiber 24cores(B)
适配器安装条(4/6) Flange blocking frame (4/6)	熔纤盘24芯(D) Splice tray-single fiber 24cores(D)	理线环 Patch cord minder loop	光缆开拔保护器 Fiber optic poke protector
1/16分路器外壳(塑料) 1/16 Splitter jacket (plastic)	1/8分路器外壳(金属) 1/8 Splitter jacket (metal)	盘纤轮 Fiber manager	密封胶带(卷装) Sealing tape (coil)
水晶头 Crystal plug	密封胶带(条装) Sealing tape (line)	理线器 Patch cord minder machine	挂钩 Hook
裸纤保护管 Bare fiber protective tube	带纤保护管 Belt fiber protective tube	光纤保护套管 Optical fiber protective sleeve	带纤保护套管 Belt fiber protective sleeve

FTTH 解决方案及产品 FTTH Solution and other Products



致力于光通信行业多年，公司能为客户提供完整的FTTH解决方案。

For many years' experience in the optical communication Filed, we can provide the whole FTTH solution to our customers.